



SAMSUNG
Recommends

Corporate & Reseller Trade In Programme



Why should a B2B customer recycle their old technology?

1

Use the residual value of your customers existing devices to:

- Reduce the cost of new.
- Upsell to higher spec devices
- Cross sell to other categories i.e. accessories and peripherals.



2

Protect your customers information with industry leading data cleanse of old devices.



3

Device recycling supports Corporate & Social Environmental responsibility KPIs.



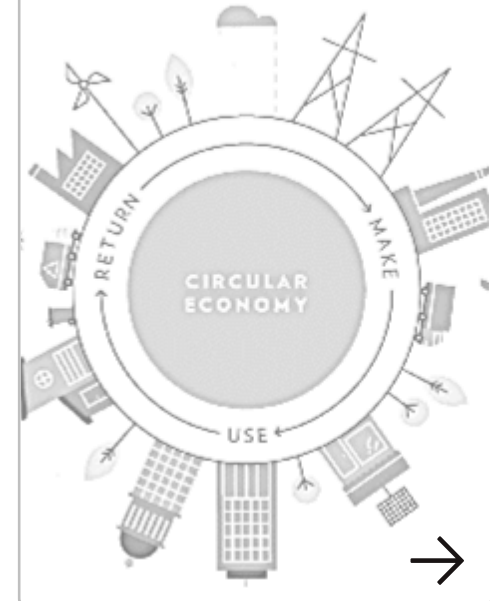
4

Prevent harmful materials entering landfill.



5

Contributes to the circular economy.



How MTR Protects Your Company's Data



Leading the way with providing secure data erasure solutions, cloud installation, supporting all smartphone operating systems.

We use BlackBelt Smartphone Defence as our preferred partner for data cleansing.

- Our custom-built management solution prevents any device leaving our facility with data on it.
- BlackBelt supports all major operating systems.
- Unique data wipe ID for every transaction with certification.



Industry Leading Secure Processing Facility

“ Our facility has been designed with the aim of providing services for OEM’s, Carriers and Large Corporates. Providing comfort that we will treat customers products with respect in a clean and secure environment. ”

Airlock



- Circa 30K Sq. Ft.
- UK Government audited facility
- 110 seat fully ESD workshop

Security



- Cat. 3 Security
- 60 internal / external cameras
- Airlock entry into facility

Receiving

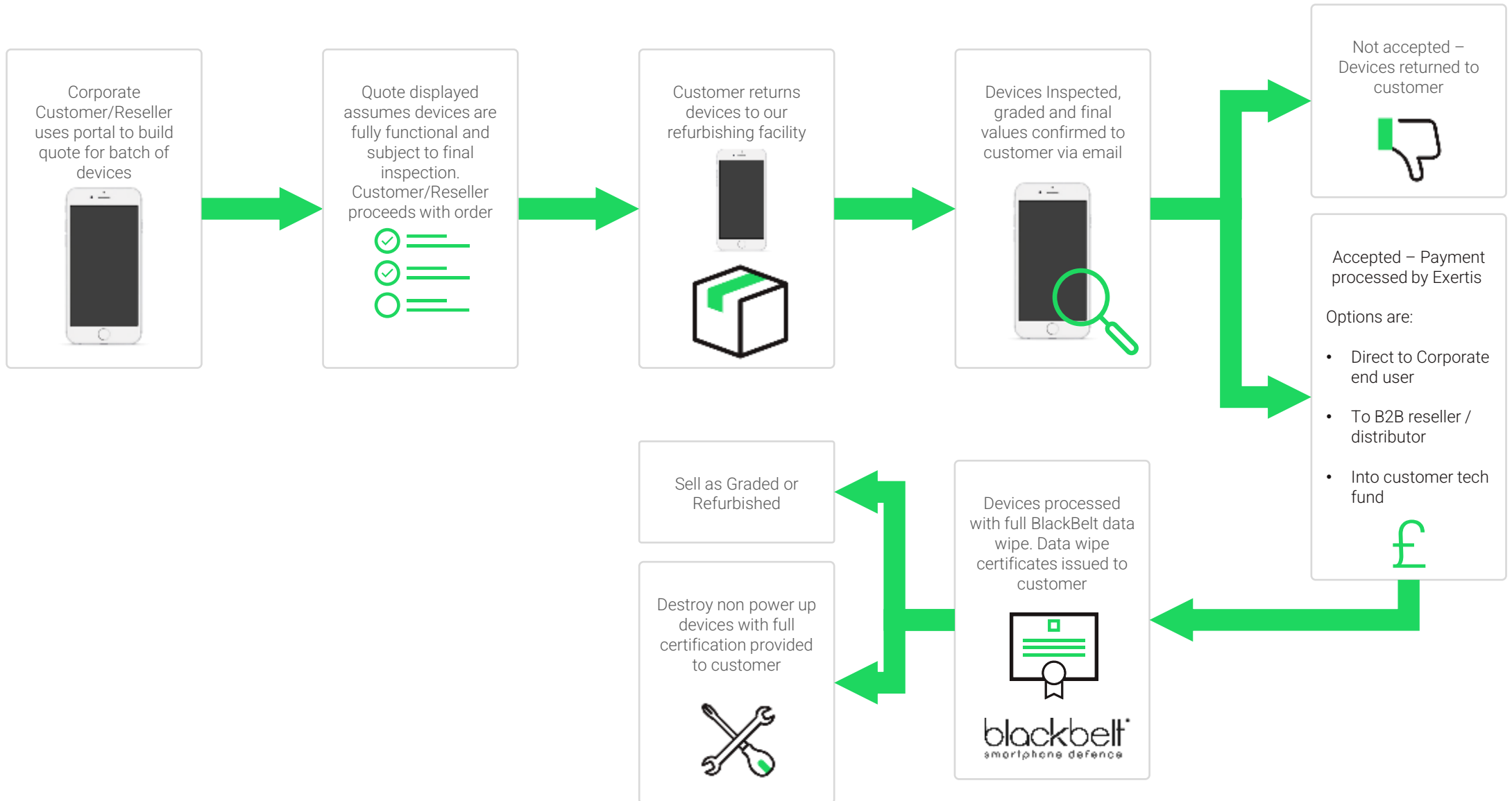


- Onsite static security
- 24 hr. complex security

Processing



B2B Trade-in Journey





**Quality Management System
Certified (ISO 9001 : 2015)**



**Environmental Management System
Certified (ISO 14001 : 2015)**



**Information Commissioners Office
Data Protection Registered**



Thank You

For further information please access the Samsung B2B trade in portal via this link: <https://business.samsungtradeinoffer.co.uk>

Alternatively contact MTR via email: enquiry@mtr.co.uk

MTR.co.uk
